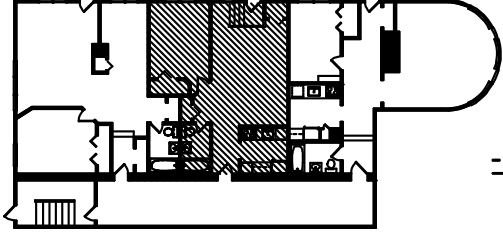
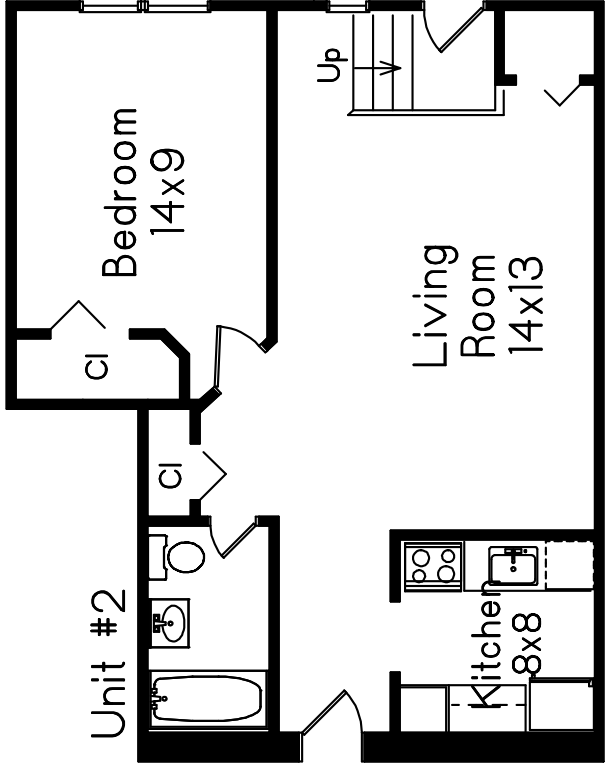


111 Woodland Street
Worcester, MA
Lower Level



C Carol Meyer
M 781-455-8100
Copyright 2013

Prepared for Hampton Properties

This drawing is an artistic rendering intended for marketing purposes only. The dimensions and/or square footage are approximate and should be verified by an independent source. This drawing is copyright protected and therefore licensed for use by those named on the floor plan.